

FEATURES & BENEFITS:

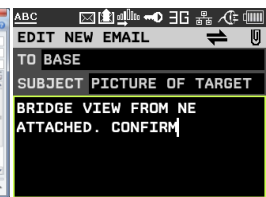
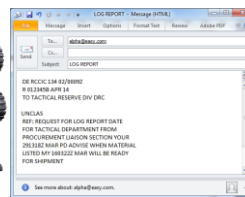
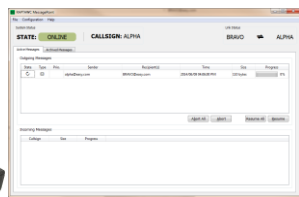
- Easy & reliable Data over HF & V/UHF networks
- API based on TCP/IP with comprehensive ICD
- TCP/IP or UDP client interface
- Broadcast and Point-to-point radio connections
- Raw data transfer capability
- File transfer capability
- Messaging support
- Delivery notification
- Compression, Resumption, Prioritization
- EMCON support
- MS Windows® And Linux software options

FRONTLINE MESSAGING

ENTRYPOINT Software, combined with RapidM modems and terminals, offers third party applications the ability to send and receive data easily, efficiently and reliably over HF and V/UHF radio links.

ENTRYPOINT provides an OSI-based Communication Stack with a documented Layer-7 Application Programming Interface (API) which allows developers to easily get access to the data transfer capability of their radios and radio modems.

ENTRYPOINT'S interface is TCP/IP based, allowing developers with routing flexibility and an easy-to-interface-with IP based protocol for sending and receiving data in various formats, from text to files to binary data.



RELIABLE DATA

Reliable delivery of crucial information is essential in disaster recovery, operational or tactical environments. **EntryPoint** ensures quick and accurate delivery of messages and files using Automatic Repeat reQuest (ARQ) protocols. Message delivery status notification is provided.

EFFECTIVE CHANNEL USE

All data is sent compressed and delivered in order of assigned priority. **EntryPoint** will automatically retry and resume undelivered or interrupted messages.

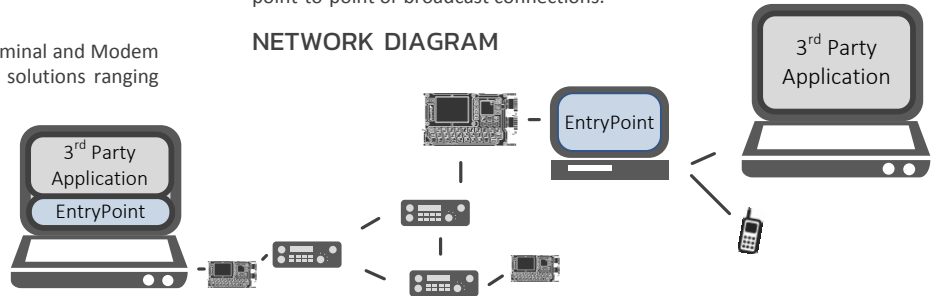
EntryPoint will optimise each packet: File attachments are compressed and image files can be optionally resized. This results in smaller transmission sizes and faster delivery.

MULTI-FREQUENCY SUPPORT (ALE) – OPTIONAL

EntryPoint optionally uses the Automatic Link Establishment (ALE) function of the RapidM modems to enable efficient multi-frequency operation.

RAPIDM TERMINALS AND MODEMS

EntryPoint is designed to be used with the **RT** and **RA** Terminal and Modem ranges, allowing support for various platforms to cover solutions ranging from person-worn, vehicular and fixed 19" installations.



Example: RAW_BINARY_DATA (0x0033) Group used for sending and receiving binary-data

Message Name	Message ID	Command	ACK	NACK	Response	Indication	Version Added	Version Deprecated
send_raw_binary_data_message	0x00330007	✓		✓	✓		1.1	---
get_raw_binary_data_message_ids	0x0033000c	✓		✓	✓		1.1	---
resume_raw_binary_data_message	0x0033000d	✓	✓	✓			1.1	---
get_raw_binary_data_message	0x0033000e	✓		✓	✓		1.1	---
abort_raw_binary_data_message	0x00330015	✓	✓	✓			1.1	---
delete_raw_binary_data_message	0x00330019	✓	✓	✓			1.1	---
new_raw_binary_data_message	0x0033001f					✓	1.1	---
raw_binary_data_status_updated	0x00330021					✓	1.1	---
raw_binary_data_send_status	0x00330025					✓	1.1	1.2

ENTRYPOINT SOFTWARE	
DATA TYPES	Binary data, Text, File Transfer, etc. Radio network configured Address Book retrievable.
MODEM CONTROL	ALE (Automatic Link Establishment) ALM (Automatic Link Maintenance) ARQ Data (Automatic Repeat reQuest) Collision Avoidance and Recovery EMCON (Emission Control, Radio TX inhibit) STANAG 4538 (3G) Modem support (RAP1 / RIPC protocol)
OPERATING SYSTEM	Windows® 7, Windows® 8.1, Windows® 10 32-bit and 64-bit, Linux GLIBC v2.23 or later
MINIMUM SYSTEM REQUIREMENTS	2 GB HDD/SSD Storage 2GB RAM Memory 10/100 Ethernet Port for connection to RapidM modem

ENTRYPOINT INTERFACES	
API	TCP/IP or UDP OSI Layer 7 interface with Interface Control Documentation (ICD)
MODEM INTERFACES	Remote Control (RS-232, Data + Modem Control) Ethernet (Data + Modem Control)
DEVICES SUPPORTED	RT Family: RT3, RT5, RT7 RA Family: RA2, RA3, RA5, RA7 TCx Modem Modules

ORDERING INFORMATION	STOCK NUMBER	DESCRIPTION
ENTRYPOINT V4 SOFTWARE - WINDOWS	RAP-PC-EPSW-VE4	PC S/W: EntryPoint, ICD, Stack EN V4
ENTRYPOINT V4 SOFTWARE - LINUX	RAP-PC-EPSW-LE4	PC S/W: EntryPoint, ICD, Linux EN V4
CONFIGURATION BUNDLE	RAP-BU-CFA5-VE4	Bundle: RA SCS 256b KMS EN V4

Distributed by:

Rapid Mobile Pty (Ltd)
Tel: +27 12 349 0000
Fax: +27 12 349 0010
Email: info@rapidm.com
Web: www.rapidm.com

Apex Corporate Park
Quintin Brand Street
Persequor Park
Pretoria, South Africa
0020



Copyright © 2020 Rapid Mobile (Pty) Ltd
Revision: REP_EN_01D